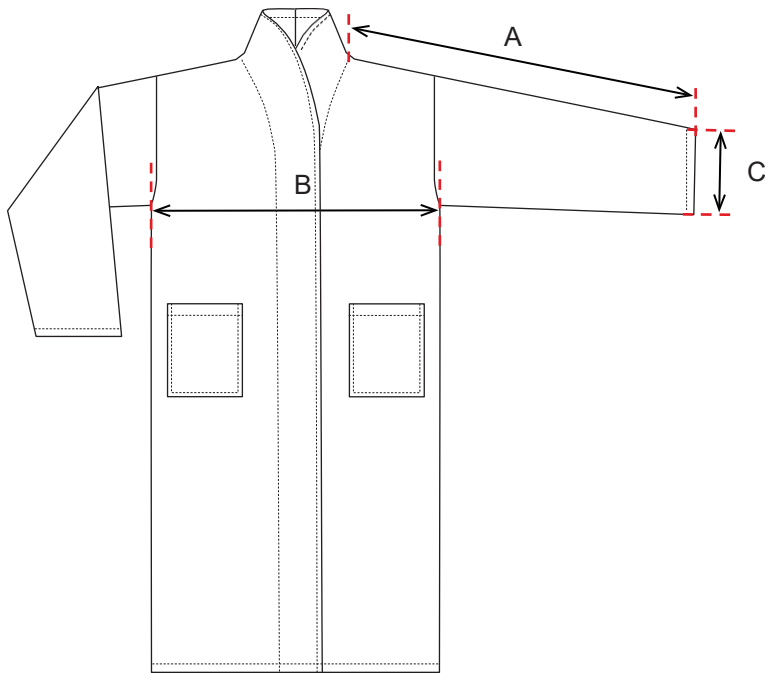


Supporting Material

2.7_2 Measuring Instructions for Bathrobe in Hotel and Healthcare



A Shoulder seam length + sleeve length

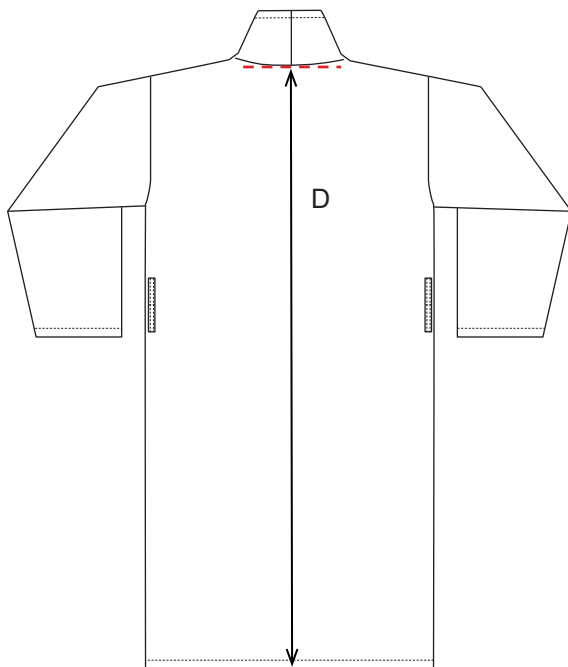
Measure shoulder seam plus sleeve length from highest point of shoulder to sleeve end. Garment is flat on table.

B 1/2 Chest width

Measure half of chest width horizontally from under arm seam to under arm seam. Garment is flat on table.

C Sleeve end width

Measure sleeve end width along the edge from top to sleeve seam. Garment is flat on table.



D Back length

Measure back length vertically down from neck point to the edge of the hem. Garment is flat on table.