



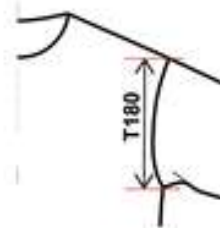
T171

Shoulder seam length

Measure shoulder seam length from neck point to sleeve seam. Garment is flat on table.

Noora Alarauhio

27.02.2014



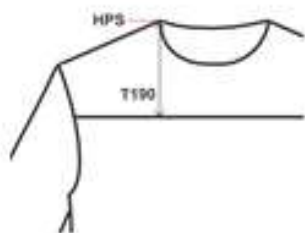
T180

Armhole height (front)

Measure armhole height vertically shoulder point down tounder arm seam. Garment is flat on table

Noora Alarauhio

27.02.2014



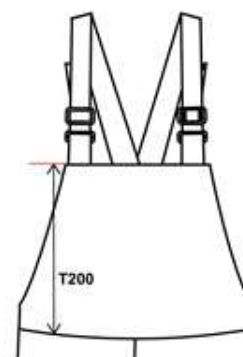
T190

Front yoke height from HPS

Measure yoke height vertically from highest point of shoulder (HPS) to yoke seam in front. Garment is flat on table.

Noora Alarauhio

27.02.2014



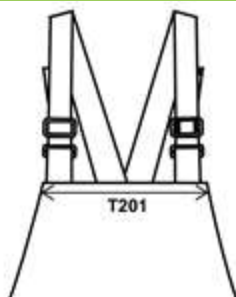
T200

Bib length

Measure bib length from top edge vertically down to waist seam in front. Garment is flat on table.

Miia Laalahti

28.02.2014



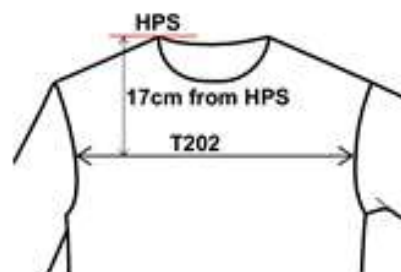
T201

Bib width

Measure bib width across top of bib edge to edge. Garment is flat on table.

Noora Alarauhio

27.02.2014



T202

Across front

Measure 17cm vertically down from highest point of shoulder(HPS). Measure across front from armhole seam to armhole seam. Garment is flat on table.

Noora Alarauhio

27.02.2014